

Boiler Safety Valves DN25



DUCO

Boiler Safety Valves 1 x 1¼" KB

DUCO boiler valves to protect closed potable heated water systems against excessive pressure.

Application

The boiler valve has to be used in a closed drinking water system. Only use the valve in a dry and frostfree location.

Min/Max. system temp. 0°C / + 95°C

Safety

Check whether the max. capacity and the opening pressure that are indicated on the valve match the values of the system.

All Duco safety valves meet the requirements of the Pressure Equipment Directive (PED) "**Directive 2014/68/EU Module B/Module D**". The quality system also complies with the NEN-EN-ISO 9001

NORM: **NEN-EN 1491**

Protection knob - Polyethylene soft (blue)

Lever - Brass

Adjustment Screw - Brass CW617N

Spring cover - Brass CW617N

Valve spindle - Brass CW617N

Preset spring - Spring steel DIN 17223 Zinc Plated

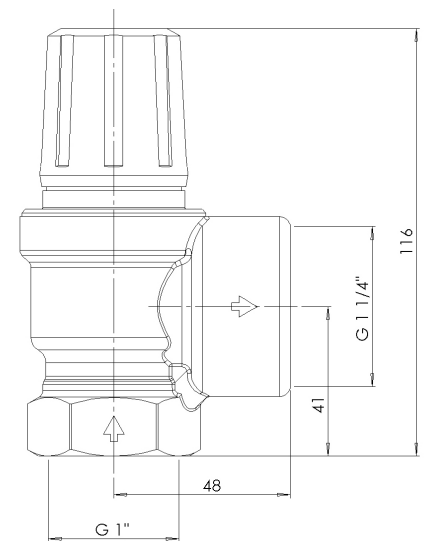
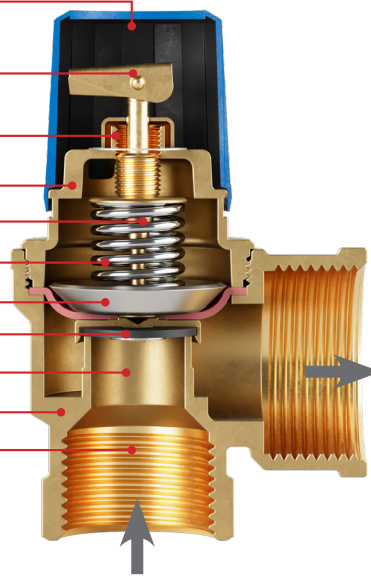
Preset limiter - Brass

Membrane - EPDM 50'Sh

Valve disk - Brass CW617N

Valve body - Brass CW617N Pb<2,2%

Valve seal - Silicon rubber 80'Sh



Boiler Safety Valves DN25

Article number	Set pressure bar	Heating capacity kW
1141-0-06-11	6	250
1141-0-07-11	7	250
1141-0-08-11	8	250
1141-0-09-11	9	250
1141-0-10-11	10	250

PUCO

PenTec bv
Edisonweg 7
3442 AC Woerden
The Netherlands

Tel. +31 (0)182 503 100
E-mail info@pentecbv.nl
Internet www.duco.nl
www.pentecbv.nl