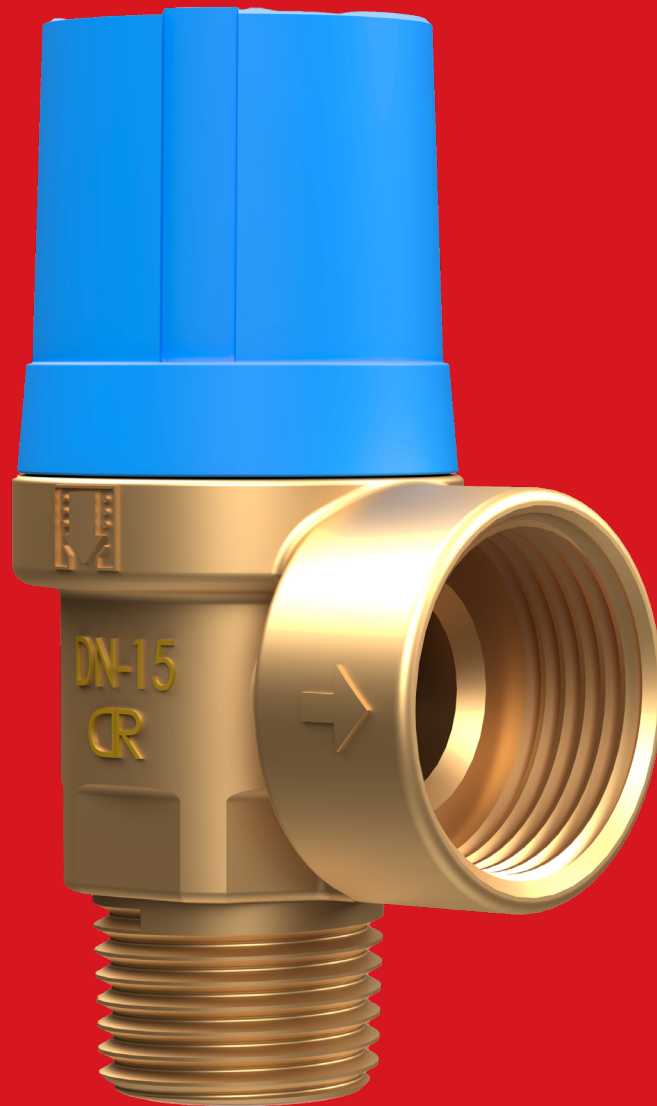


# Boiler Safety Valves DN15



**PUCO**

# Boiler Safety Valves DN15 1/2 x 3/4" KEB

DUCO boiler valves to protect closed potable heated water systems against excessive pressure.

## Application

The boiler valve has to be used in a closed drinking water system. Only use the valve in a dry and frostfree location. Min/Max. system temp. 0°C / +95°C

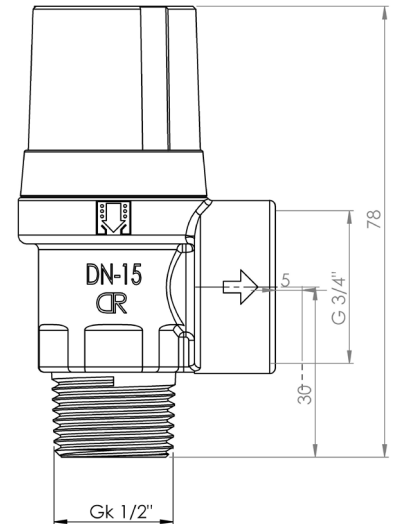
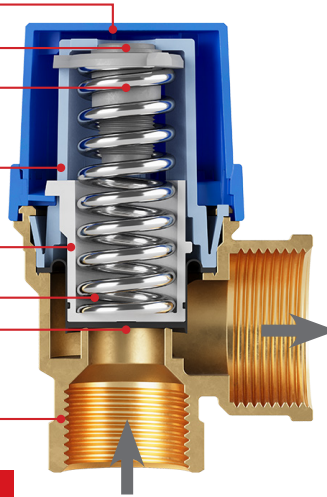
## Safety

Check whether the max. capacity and the opening pressure that are indicated on the valve match the values of the system.

All Duco safety valves meet the requirements of the Pressure Equipment Directive (PED) "Directive 2014/68/EU Module B/Module D". The quality system also complies with the NEN-EN-ISO 9001.

**NORM: NEN-EN 1491**

Control knob	- ABS (black)
Adjustment screw	- PA 6 - 15% GF
Spring seat	- PBT 420 1001
Spring cover	- PA 6,6 - 30%GF
Valve disk	- PA 6 - 30%GF
Preset spring	- Spring steel (galvanised)
Membrane	- EPDM Shore Peroxide cured
Valve body	- Brass (CW617N) Pb<2,2%



 This illustration is different and is only intended to explain the valve parts.



## Safety Valves DN15

Article number	Set pressure bar	Heating capacity kW
1095- 0-54-11	4	75
1095- 0-56-11	6	75
1095- 0-57-11	7	75
1095- 0-58-11	8	75
1095- 0-59-11	9	75
1095- 0-60-11	10	75



PenTec bv  
Edisonweg 7  
3442 AC Woerden  
The Netherlands

Tel. +31 (0)182 503 100  
E-mail info@pentecbv.nl  
Internet www.duco.nl  
www.pentecbv.nl